

# MONTHLY MEMBERSHIP PROGRESS REPORT

LOCATION BRITISH COLUMBIA

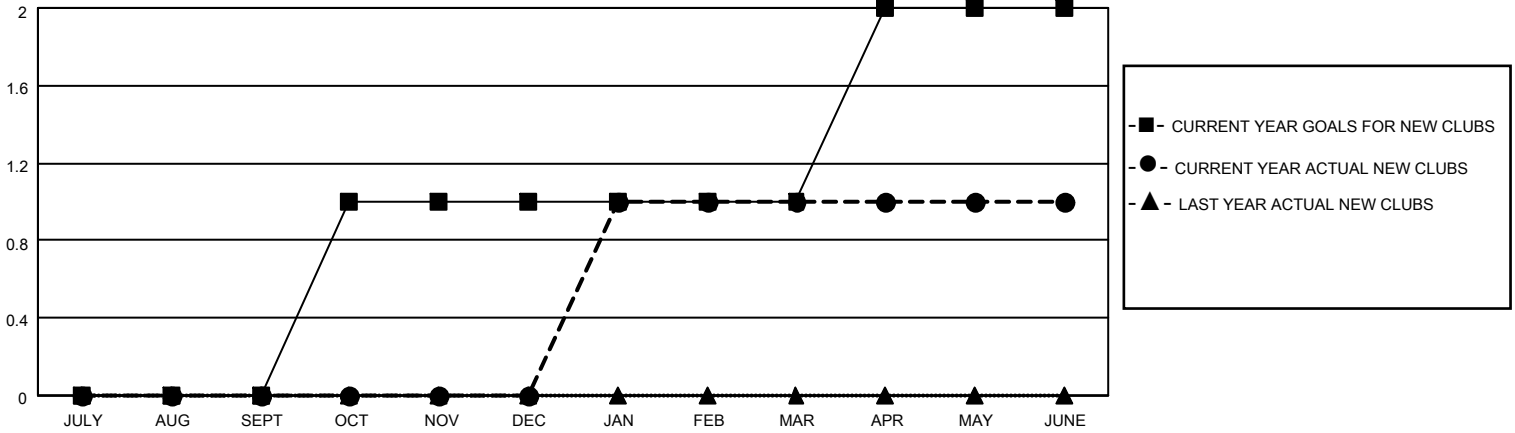
District 19 A

Results as of: 6/30/2023

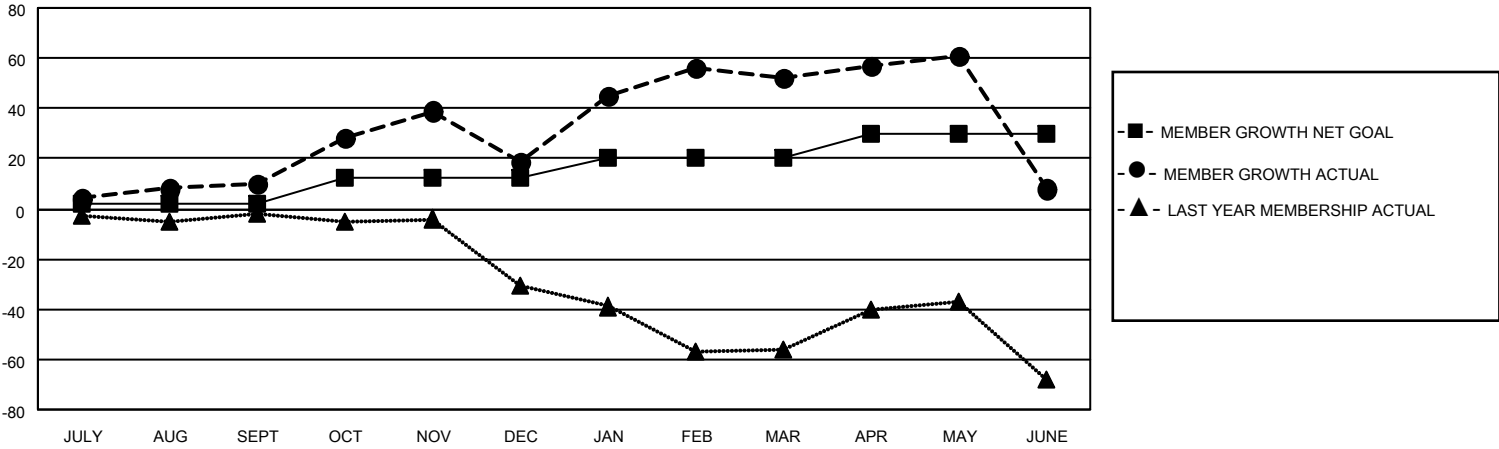
Clubs			
RESULTS FOR 2022-2023			
QUARTER	NEW CLUB GOAL	NEW CLUBS	DROPPED CLUBS
JULY/AUG/SEPT	0	0	0
OCT/NOV/DEC	1	0	1
JAN/FEB/MAR	0	1	0
APR/MAY/JUNE	1	0	3

Members			
RESULTS FOR 2022-2023			
QUARTER	MEMBER GROWTH NET GOAL	MEMBER GROWTH ACTUAL	DROPPED MEMBERS ACTUAL (including transfers)
JULY/AUG/SEPT	2	35	24
OCT/NOV/DEC	10	39	30
JAN/FEB/MAR	8	52	15
APR/MAY/JUNE	10	29	72

**GOALS AND ACTUAL NEW CLUBS CUMULATIVE**



**GOALS AND ACTUAL MEMBERS CUMULATIVE**



**DROPPED CLUBS: 4**

**30 CLUBS OF 47 ADDED 1 OR MORE NEW MEMBERS**

**GENDER DISTRIBUTION**

MALE	477 (51.90%)
FEMALE	441 (47.99%)
NON BINARY	0 (0.00%)
PREFER NOT TO ANSWER	1 (0.11%)

**DROPPED MEMBERS**

[CLICK HERE FOR CUMULATIVE MEMBERSHIP DATA](#)

DECEASED	3
CLUB CANCELLED	44
OTHER	94
<b>TOTAL</b>	<b>141</b>

TOTAL FAMILY UNIT MEMBERS 60

FAMILY MEMBERS PAYING HALF DUES 31